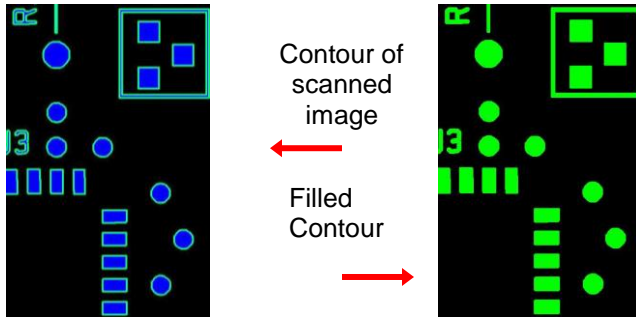


FABScan Lite & Xtra Lite™

"Linking existing designs to CAD & Production"



WHAT IS FABScan Lite?

FABScan Lite is a fully integrated, stand-alone workstation linking existing or old designs with today's automated production environment.

FABScan Lite uses Windows based software integrated with a high-resolution, calibrated flatbed scanner. Scanning can be performed in color or B/W mode. This combination allows fast vectorization of data for original board designs, regardless of input.

FABScan Xtra-Lite

A software only version is also available which imports un-calibrated standard TIFF or BMP images from any scanner platform and then converts the image to vector format using the same processes.

INPUT DATA VERSATILITY

FABScan Lite adds flexibility to the fabrication process. Utilizing its calibrated scanner, FABScan Lite inputs silver or diazo film, Mylar images, technical drawings, PCBs or your original hand-taped designs to produce 274X Gerber data.

AUTOMATIC FEATURES

Tired of using slow vectorization methods? FABScan Lite uses a one-button feature that quickly and automatically vectorizes the image. Data is converted to vector format by creating a contour and fill of image, and generating a Gerber 274X formatted output file. FABScan Lite is a one step, low-cost vectorization tool.

WHY USE FABScan Lite?

- **Necessity:** Supply production with 274X Gerber data.
- **Flexibility:** Use Silver film, Mylar, Diazo, Glass, PCB, paper as input.
- **Security:** Prevent film/drawing deterioration by storing images in electronic format.
- **Security:** Archive multiple copies of designs, both on and off-site.

SCANNING

- Silver Film, Mylar, Diazo, PCBs, paper
- 400, 1000, 2000, 3200 and 4000 DPI

AUTOMATIC FUNCTIONS

- Automatic contour and fill of image, creating a 274X formatted Gerber file

OUTPUT FILES

- Gerber files (274X)

UPGRADEABLE

FABScan Lite can easily be upgraded to have full reverse engineering (FABScan) capabilities.

SCANNER

- High-Resolution Flatbed Scanner, Size A3: (400/1000/2000/3200*/4000*/4800* dpi)
- Calibrated Accuracy: $\pm 0.0015"$ ($\pm 0.0381\text{mm}$)
- Scanning Bed Area: 11.7" x 16.5" (297mm x 420mm)
- Maximum Work Area: 32.0" x 32.0" (813mm x 813mm)

**Reduced scanning area for 3200 and 4800 dpi.*

COMPUTER**

- Multi Core Processor - 3 GHz
 - 1 TB 7200 RPM HD, 8 - 16 GB RAM
 - CD/DVD ROM
 - Flat Panel Monitor
 - Ethernet Connection
 - Windows 7 or 8, 64-Bit w/ 2 avail. USB2 or USB3 ports
- *Recommended minimum requirements for customer-supplied PC.*

ADDITIONAL SYSTEM COMPONENTS

- Precision Glass Calibration Grid
- Software Protection Key
- Scanning Accessory Package

(All specifications and designs subject to change without notice.)

The following are trademarks of the indicated companies: Gerber, Ucamco; HP, Hewlett-Packard; MS-DOS, Windows 7 / 8, Microsoft®. FABScan Lite™ and FABScan XtraLite™ are a trademarks of Smartsonic.



6724 Eton Ave
Canoga Park, CA 91303 USA
T:818.610.7900 F: 818.610.7909
smt@smartsonic.com www.smartsonic.com